

Spring View

HOME SERIES



SKYLINE[®]

BRINGING AMERICA HOME. BRINGING AMERICA FUN.
ARKANSAS CITY, KANSAS

Member



NAHB
NATIONAL ASSOCIATION
OF HOME BUILDERS

24' SERIES



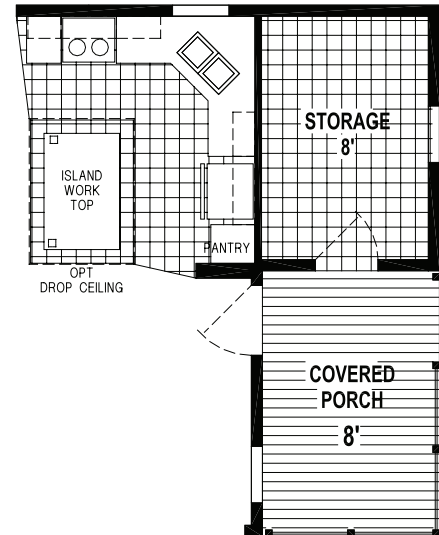
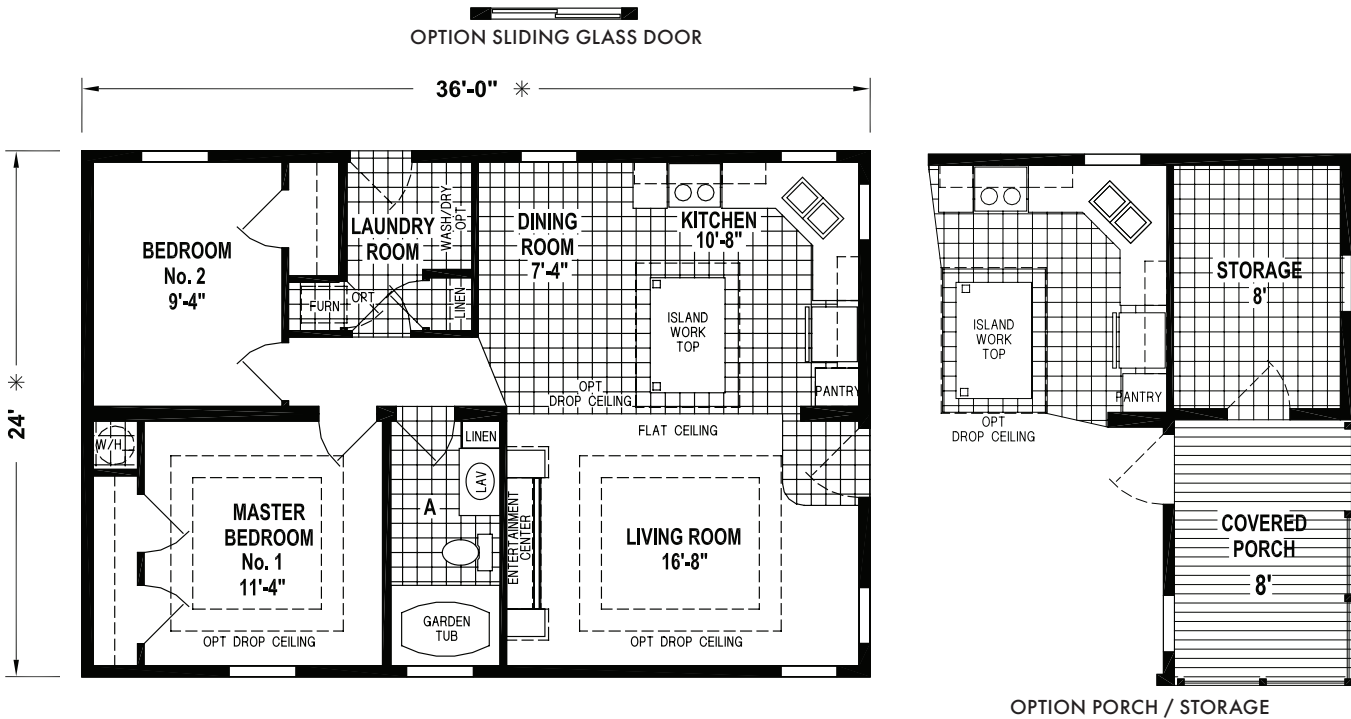
Some features shown may be optional.

Living is easy in the generously spacious Spring View series by Skyline Homes. The open floor plans and variety of options feature spacious living areas, bedrooms and stylish gourmet kitchens that flow through to dining rooms. Beautiful finishing elements such as tile backsplashes and high-end appliances highlight the Spring View line and set it apart from the competition.

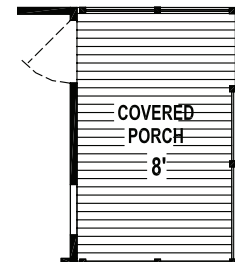
Manufactured in Arkansas City, Kansas and backed by over 65 years of manufacturing experience, a 15-month warranty and stellar customer service – take a look for yourself to see why the Spring View series by Skyline Homes is the right decision for you and your family.

5882

36' x 24' - 864 SQ. FT. - 2 BEDROOMS - 1 BATH



OPTION PORCH / STORAGE



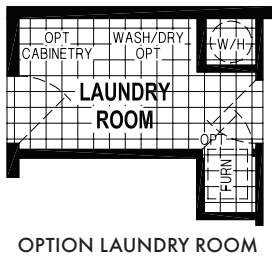
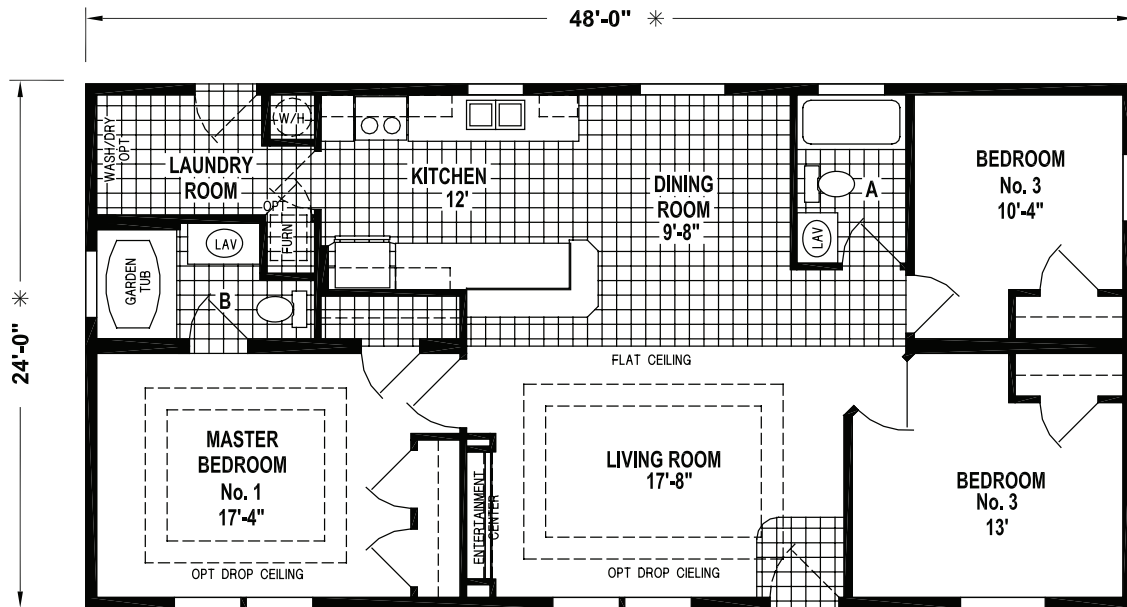
OPTION PORCH

SKYLINE HOMES -
COMMITTED TO QUALITY
CRAFTSMANSHIP, VALUE &
CUSTOMER SATISFACTION

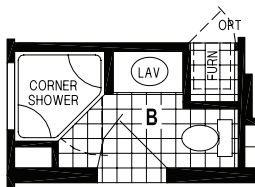
5828

48' x 24' - 1,152 SQ. FT. - 3 BEDROOMS - 2 BATHS

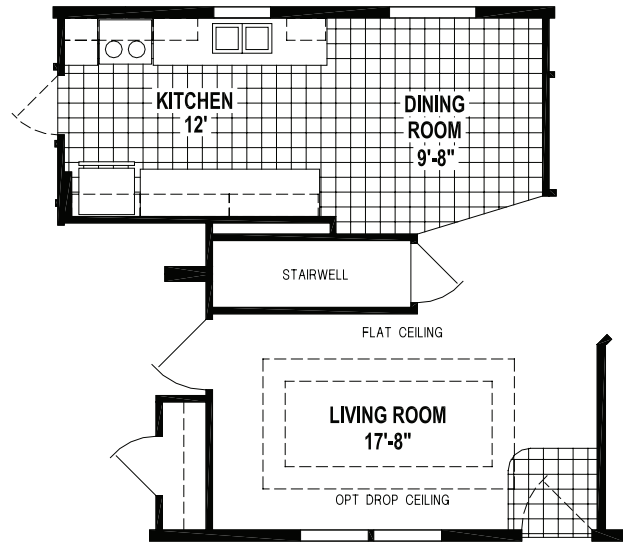
OPTION SLIDING GLASS DOOR



OPTION LAUNDRY ROOM



OPTION CORNER SHOWER BATH

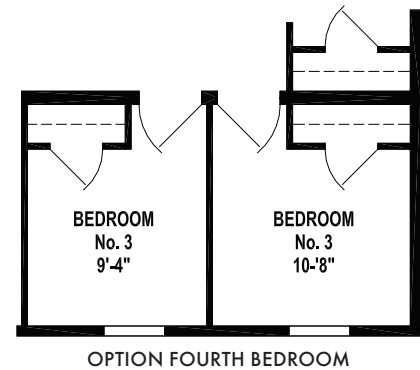
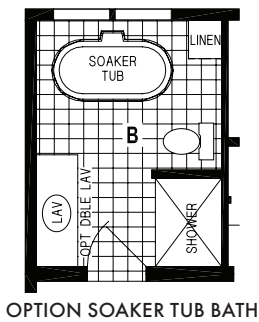
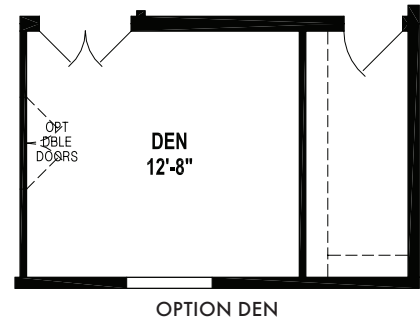
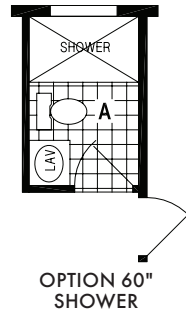
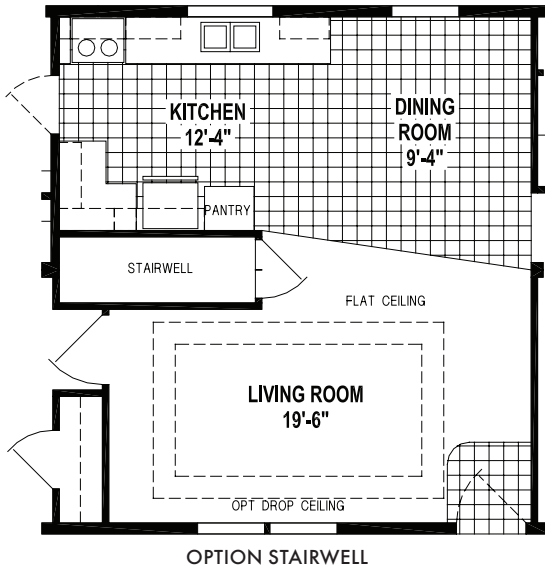
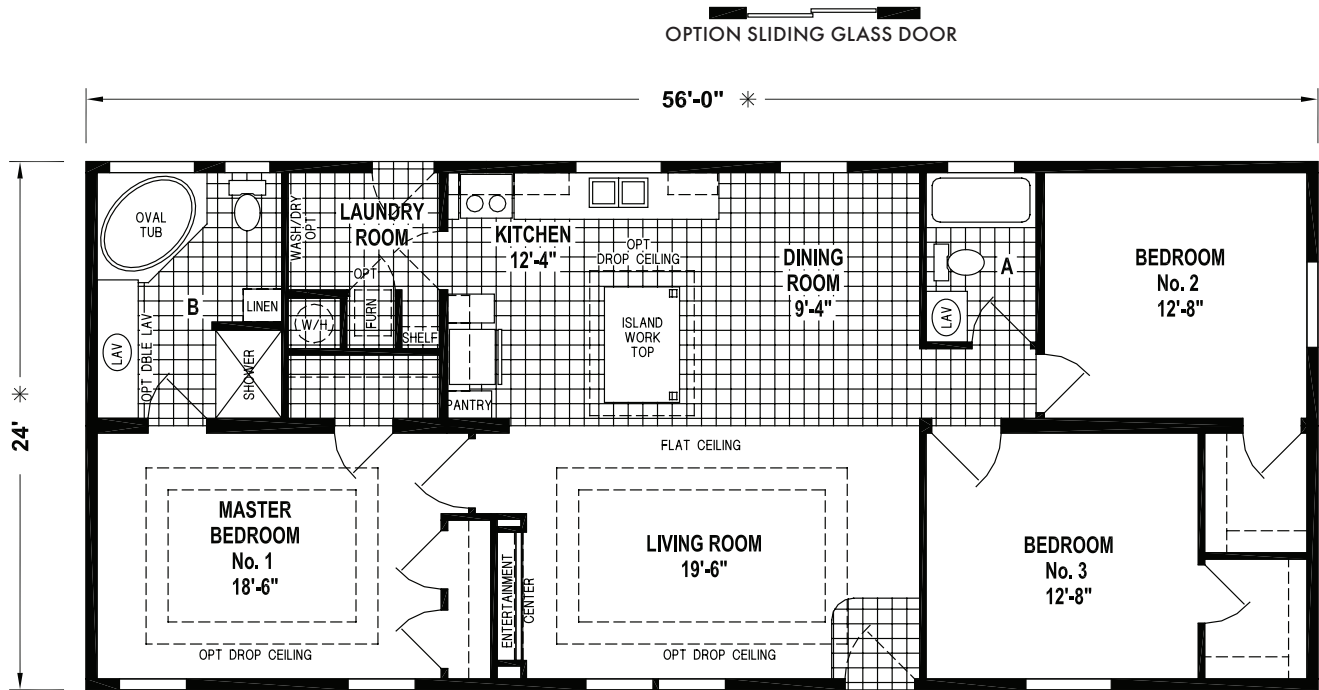


OPTION STAIRWELL

24' SERIES

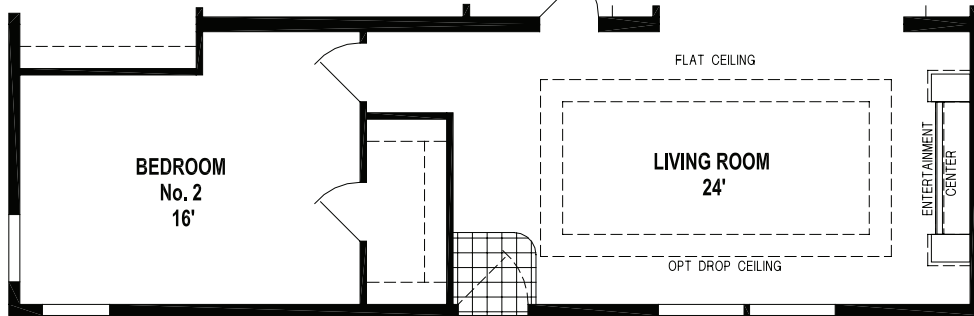
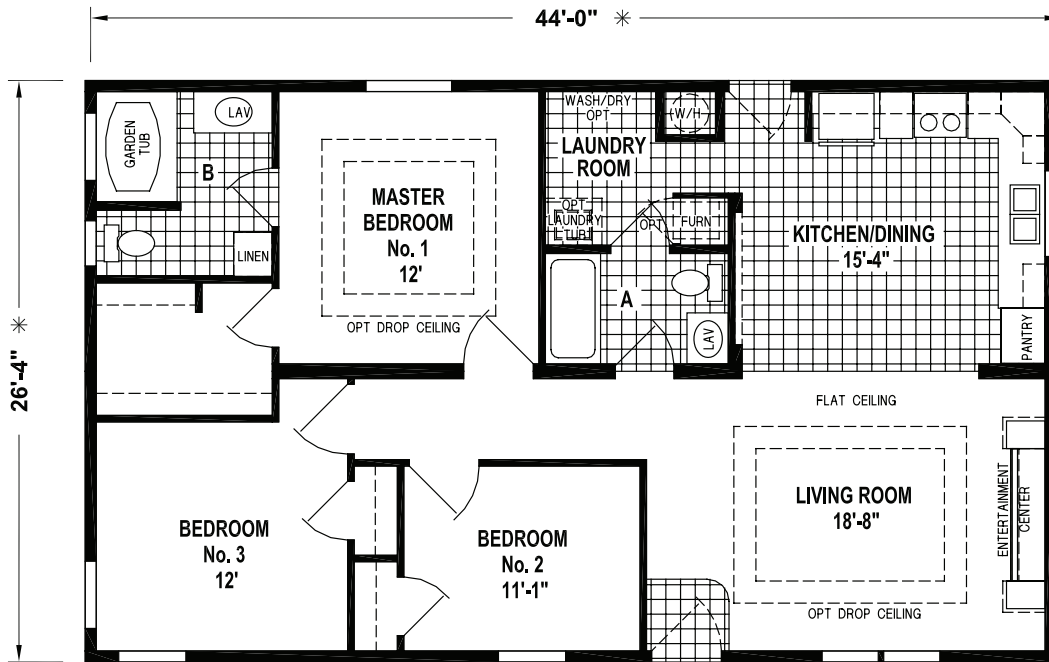
5852P

56' x 24' - 1,344 SQ. FT. - 3 BEDROOMS - 2 BATHS

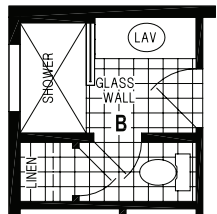


6610

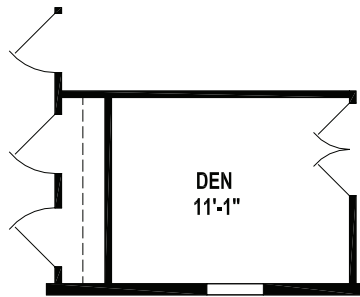
44' x 28' - 1,158 SQ. FT. - 3 BEDROOMS - 2 BATHS



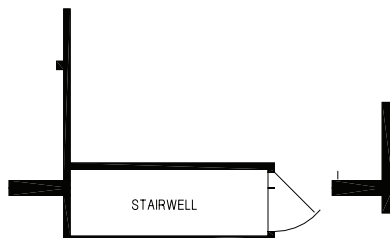
OPTION TWO BEDROOM CONFIGURATION



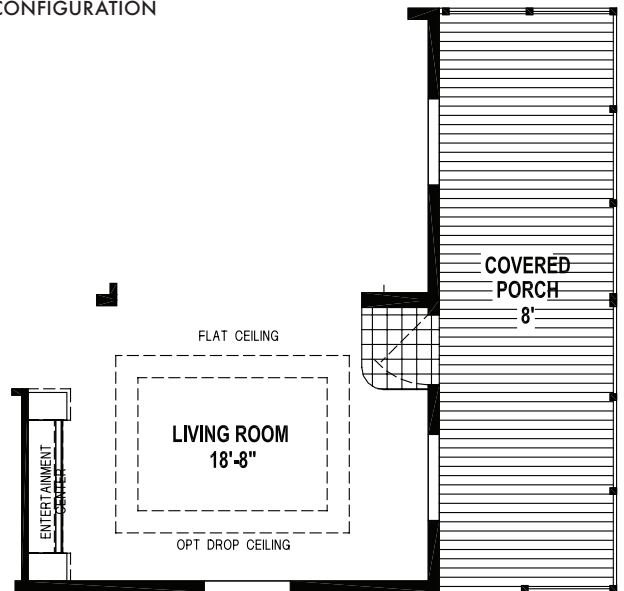
OPTION WALK-IN SHOWER



OPTION DEN



OPTION STAIRWELL

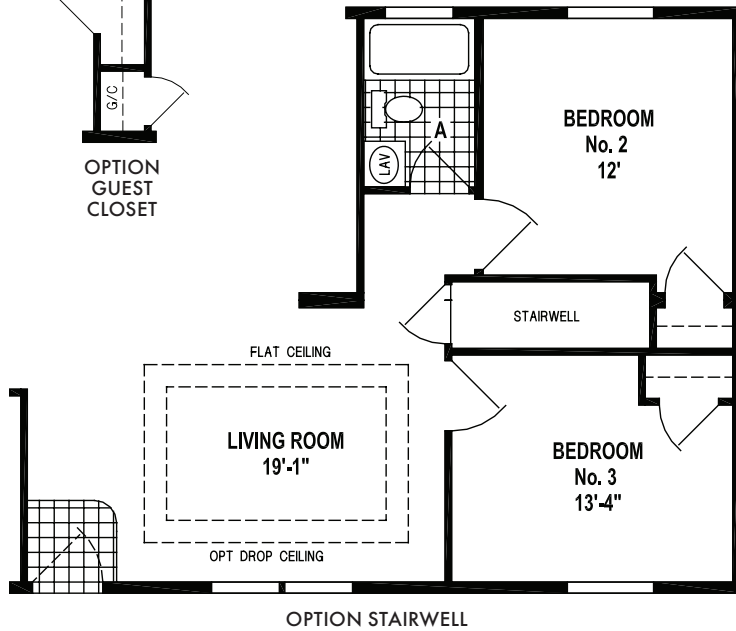
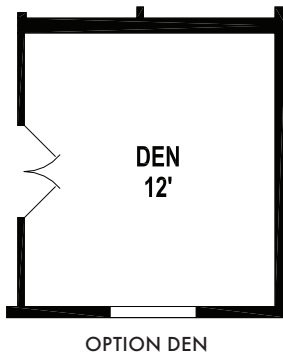
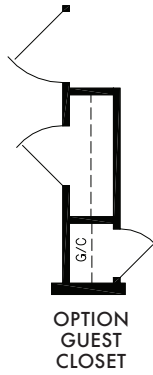
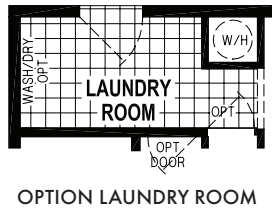
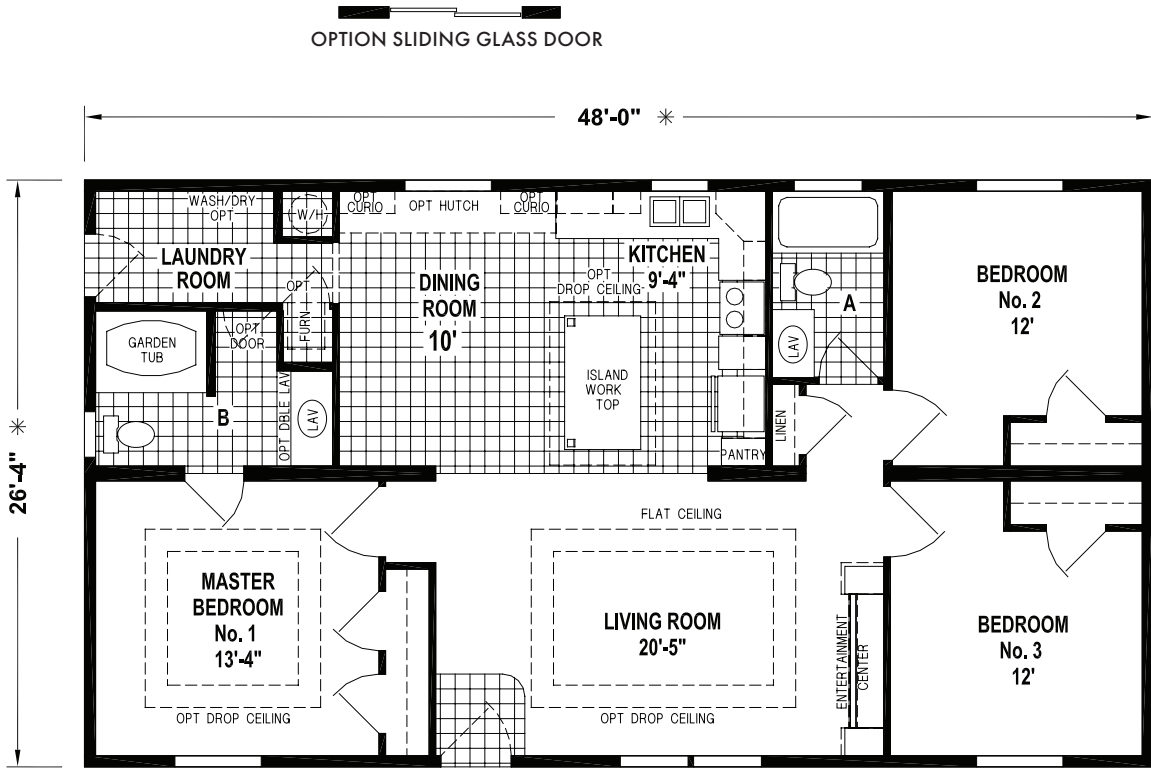


OPTION PORCH/ALTERNATE ENTRY

28' SERIES

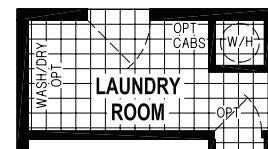
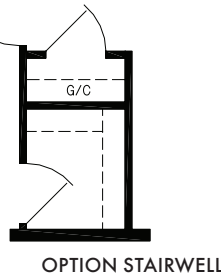
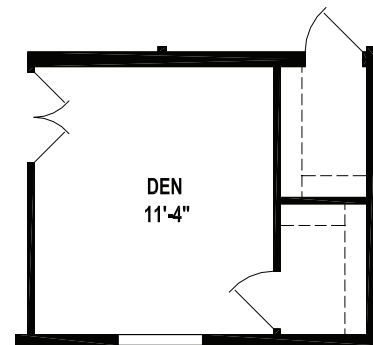
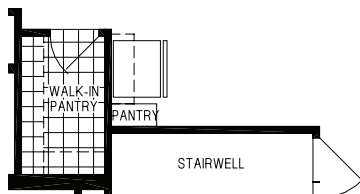
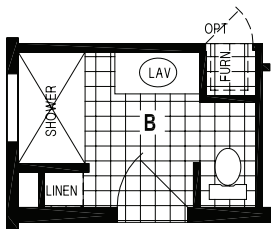
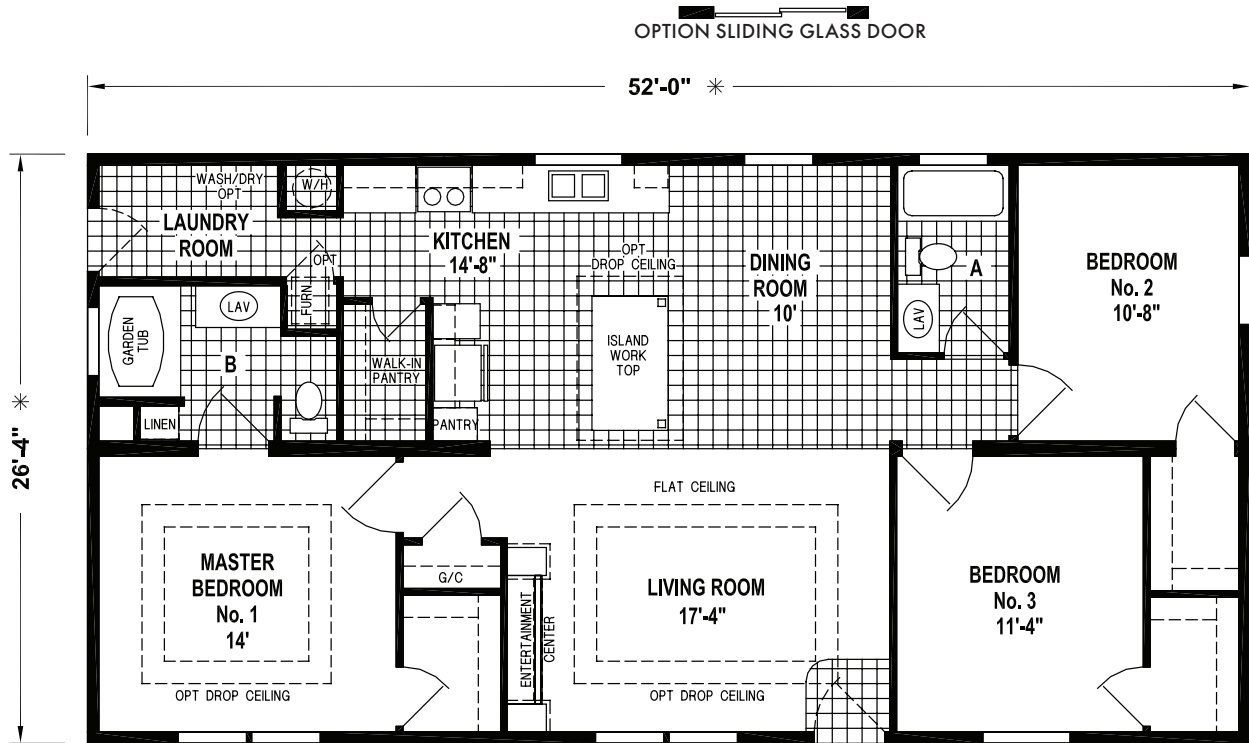
6605P

48' x 28' - 1,263 SQ. FT. - 3 BEDROOMS - 2 BATHS



6655P

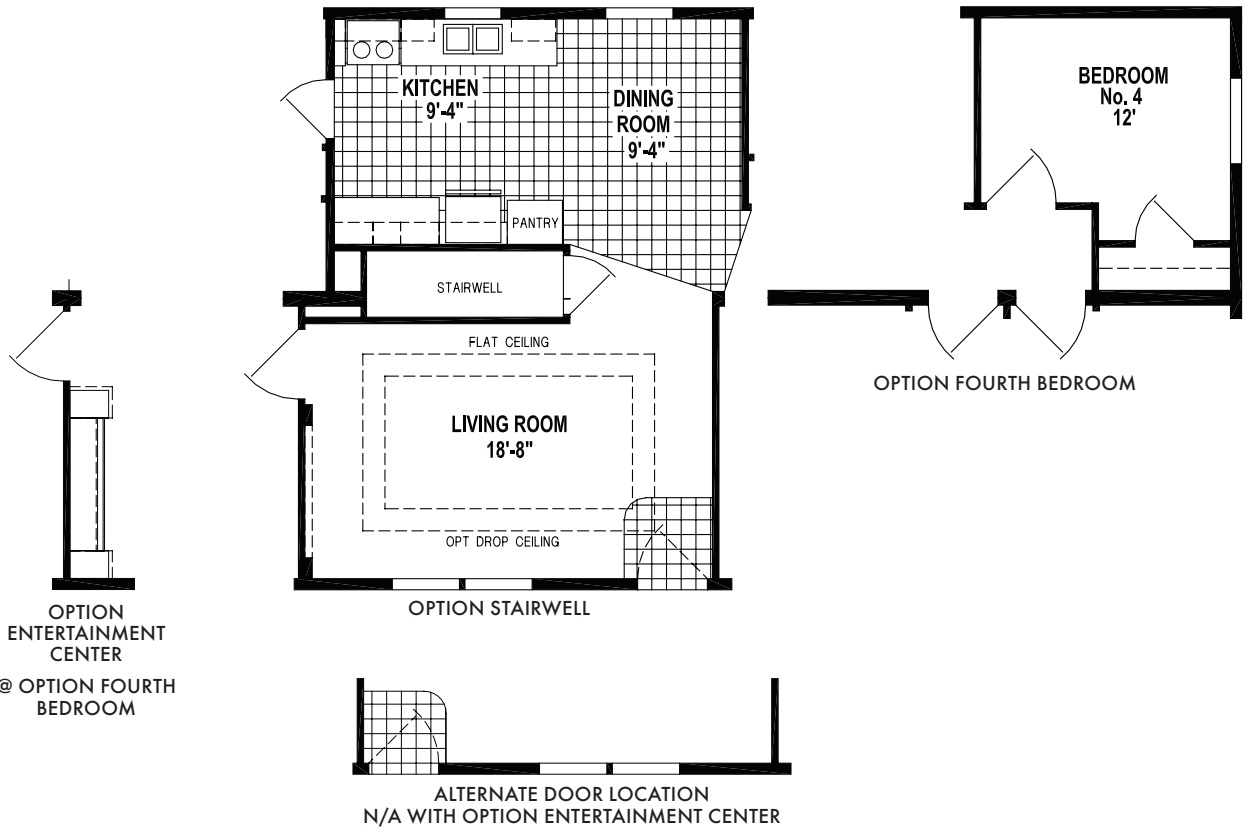
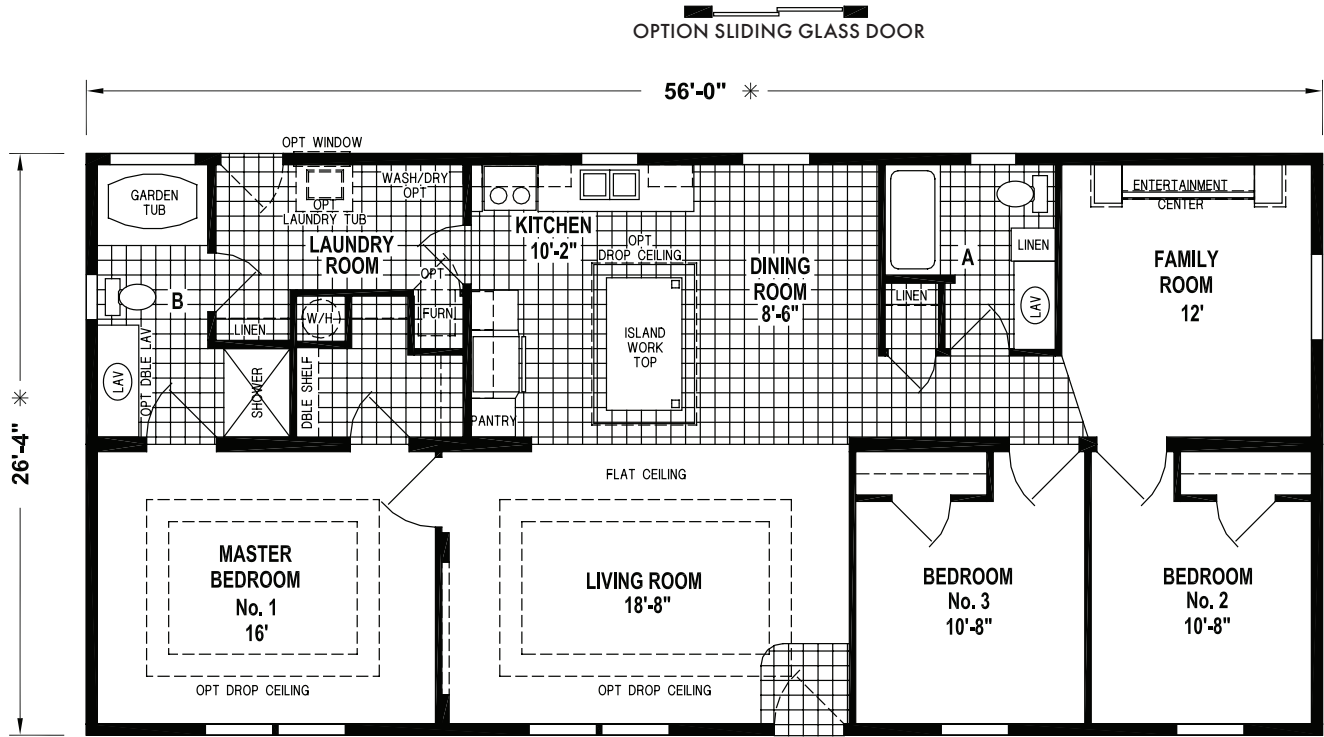
52' x 28' - 1,383 SQ. FT. - 3 BEDROOMS - 2 BATHS



28' SERIES

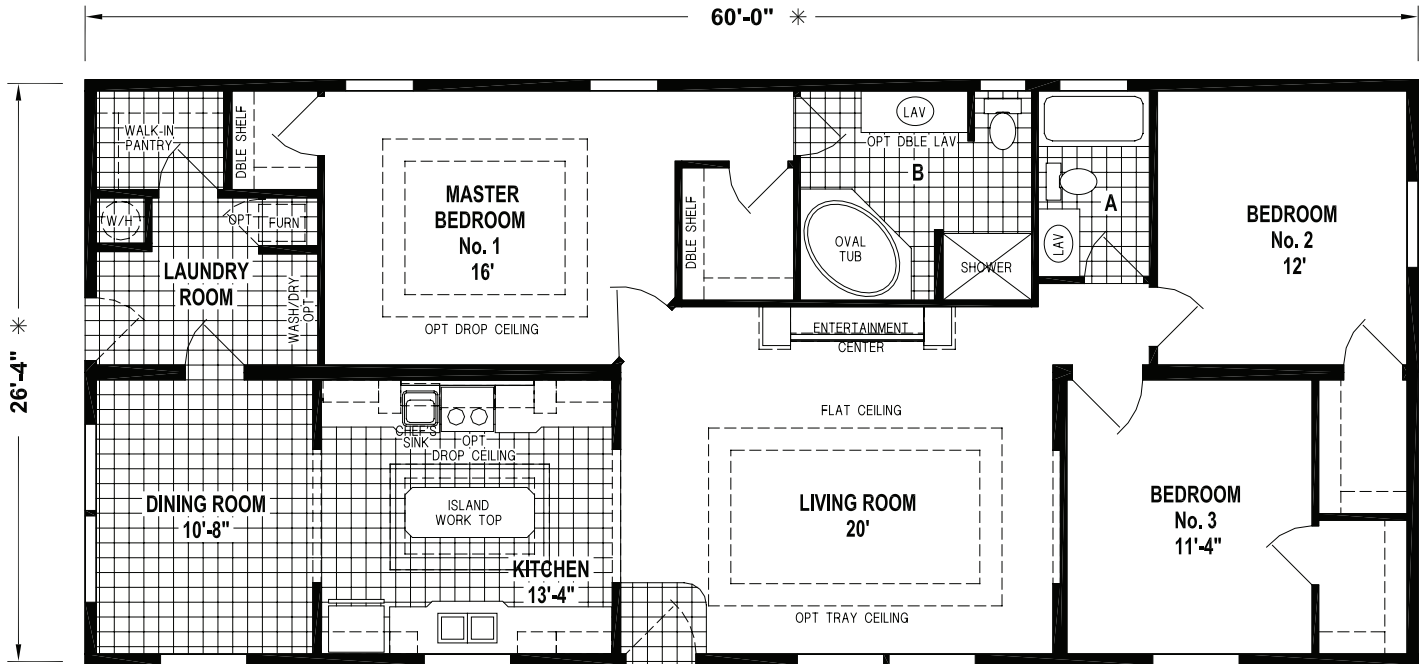
6679P

56' x 28' - 1,474 SQ. FT. - 3 BEDROOMS - 2 BATHS

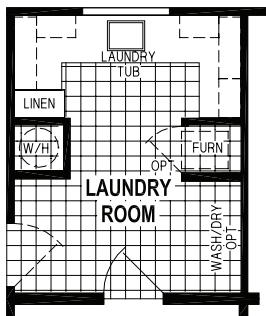


6616

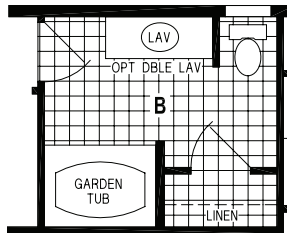
60' x 28' - 1,580 SQ. FT. - 3 BEDROOMS - 2 BATHS



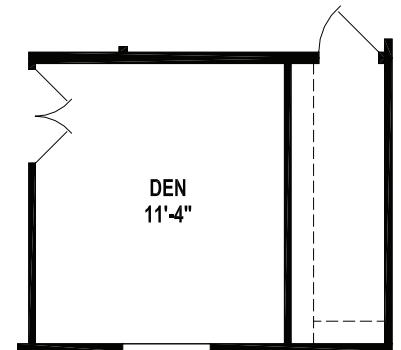
OPTION SLIDING GLASS DOOR



OPTION LAUNDRY ROOM



OPTION MASTER BATH



OPTION DEN

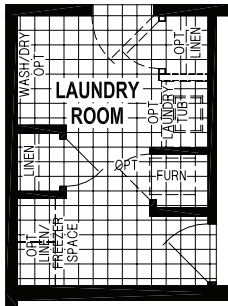
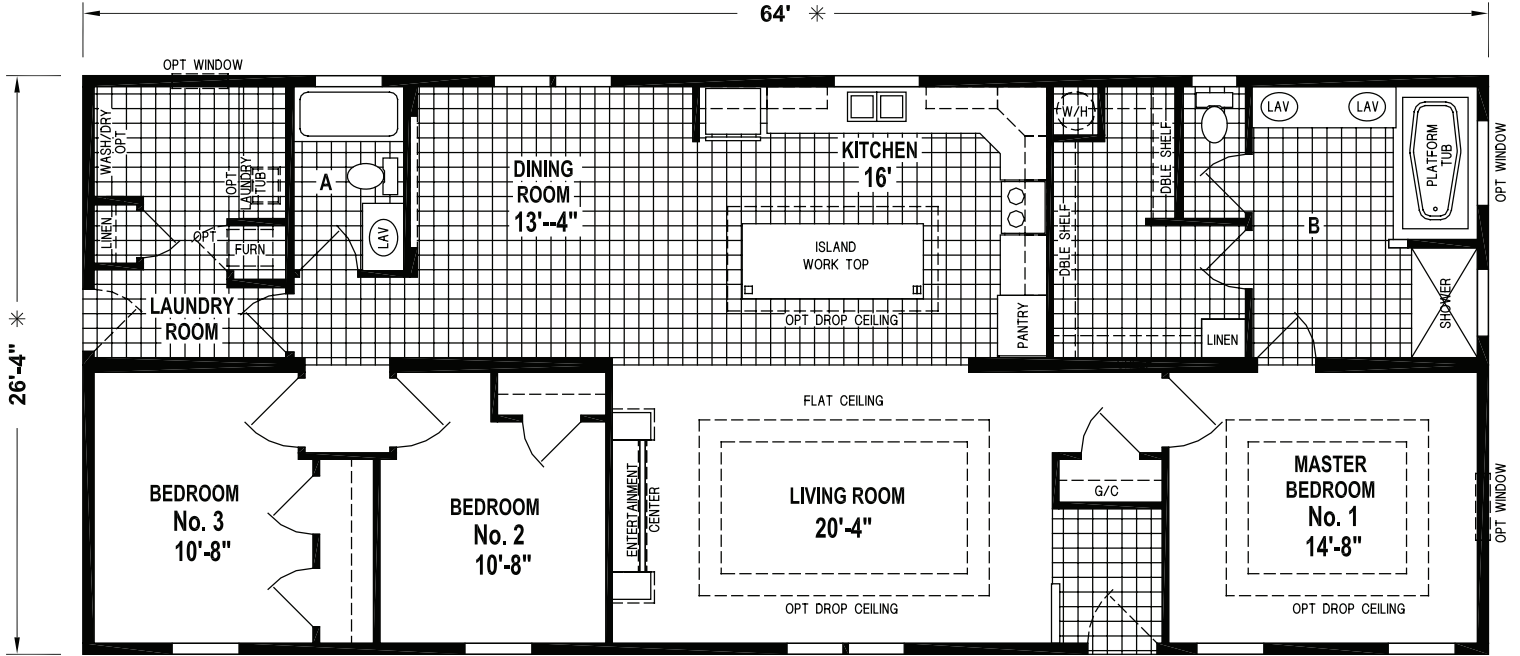
All Skyline homes are covered by our no-nonsense 15-month warranty, the very best in the industry. It's our way of showing our customers how much we believe in the quality we build into every Skyline home. Our warranty gives new homeowners the assurance that comes from working with a company with more than six decades of building.

28' SERIES

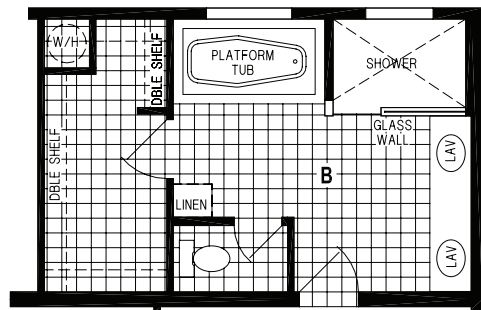
6640

64' x 28' - 1,664 SQ. FT. - 3 BEDROOMS - 2 BATHS

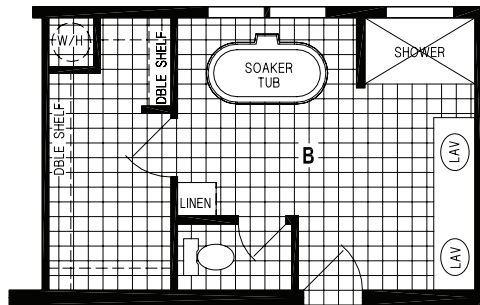
OPTION SLIDING GLASS DOOR



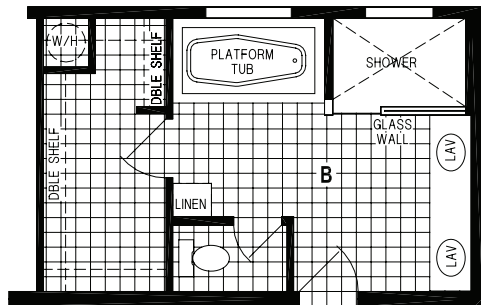
OPTION LAUNDRY ROOM



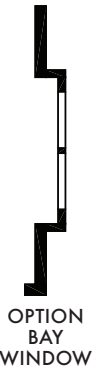
OPTION DELUXE MASTER BATH



OPTION SOAKER TUB MASTER BATH



OPTION DELUXE SOAKER TUB MASTER BATH

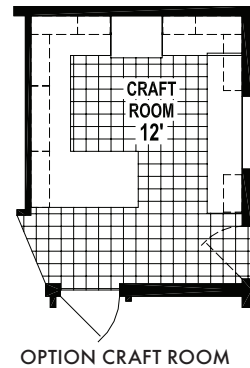
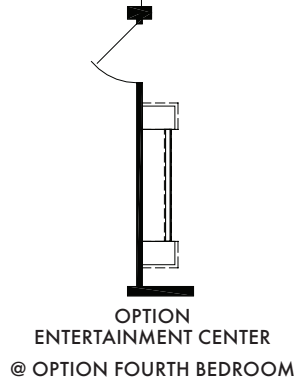
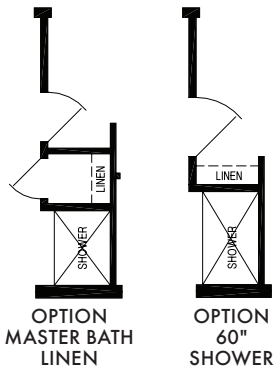
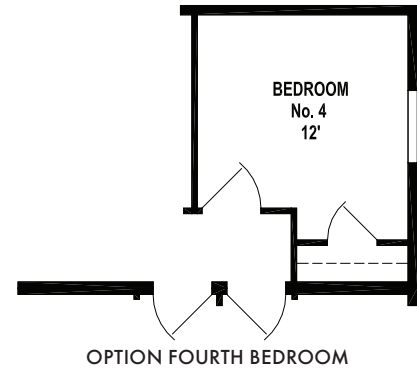
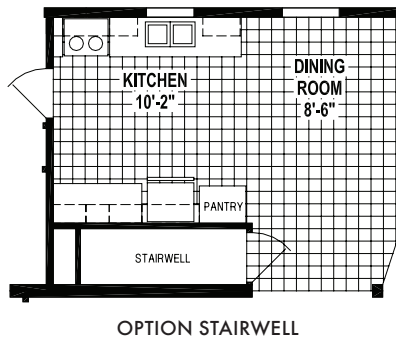
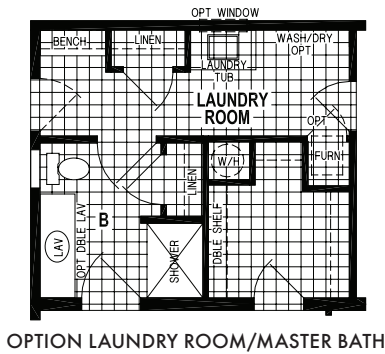
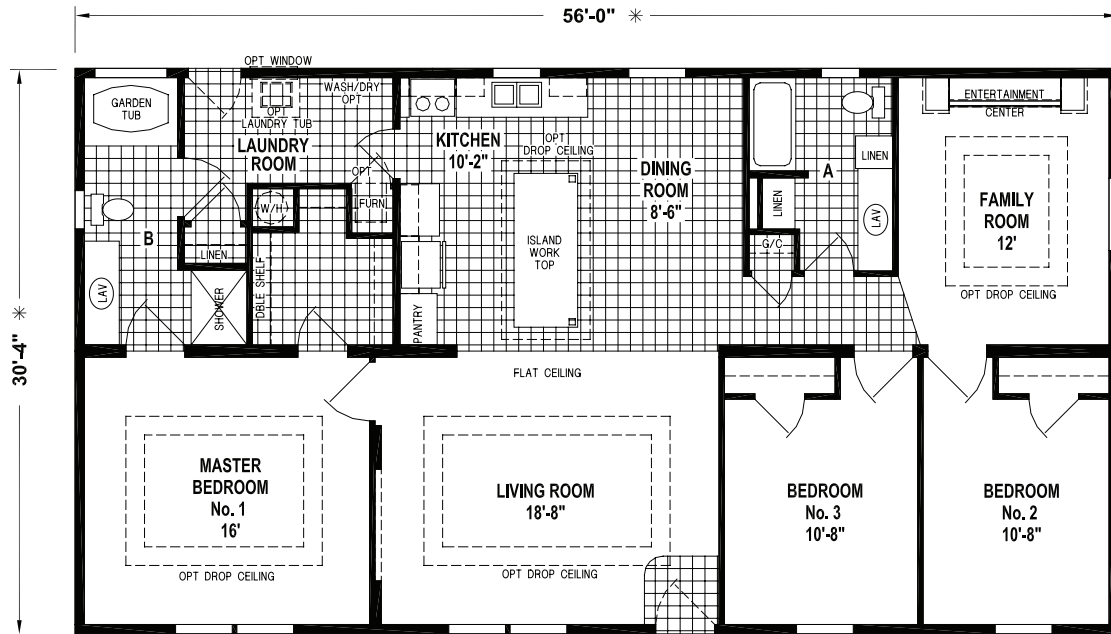


OPTION BAY WINDOW

6879P

56' x 32' - 1,698 SQ. FT. - 3 BEDROOMS - 2 BATHS

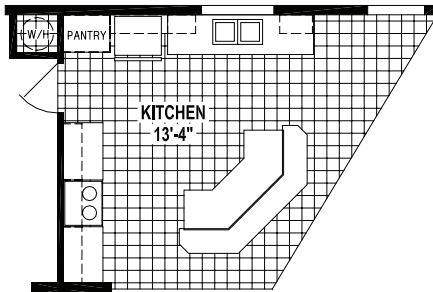
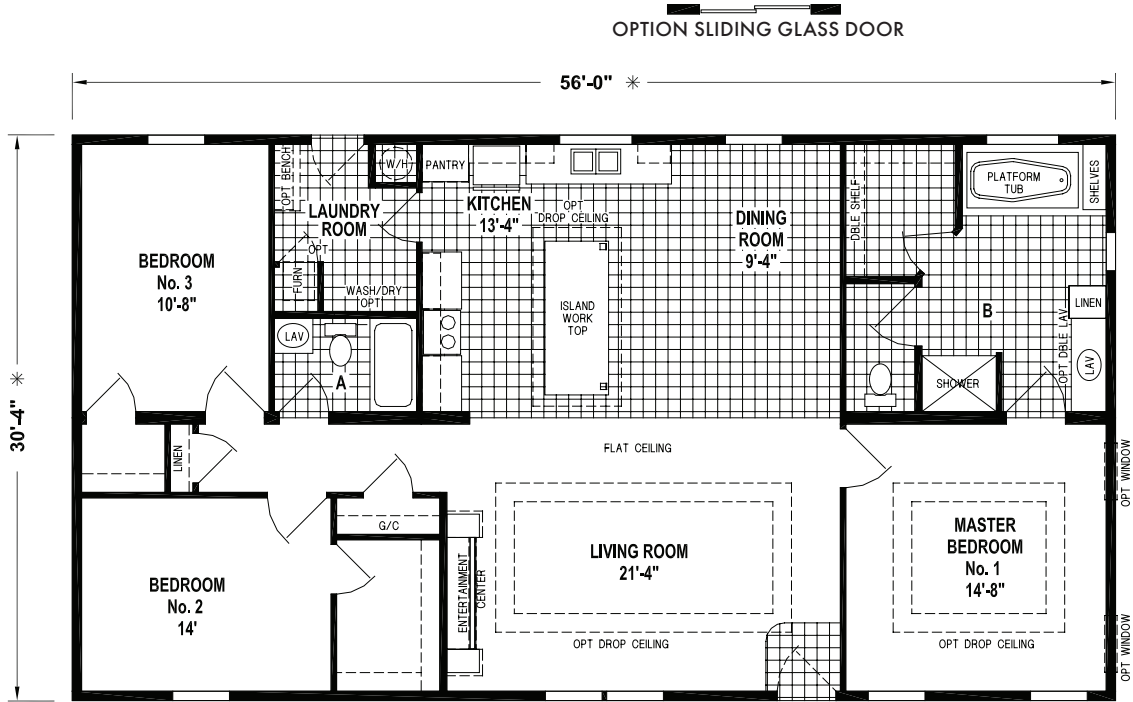
OPTION SLIDING GLASS DOOR



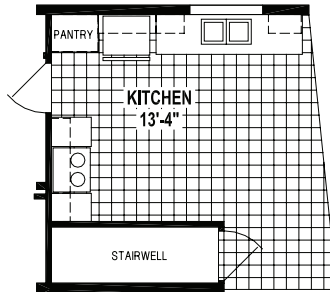
32' SERIES

6887P

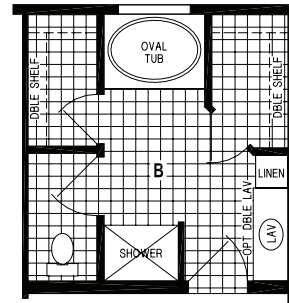
56' x 28' - 1,698 SQ. FT. - 3 BEDROOMS - 2 BATHS



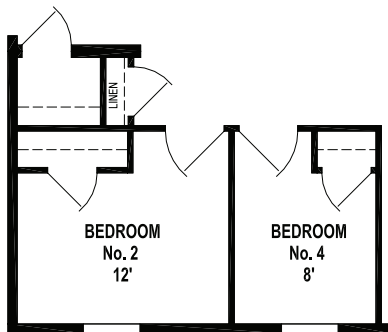
OPTION ISLAND KITCHEN



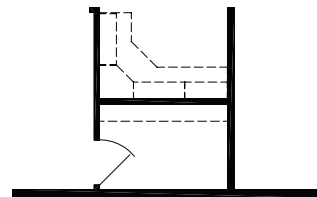
OPTION STAIRWELL



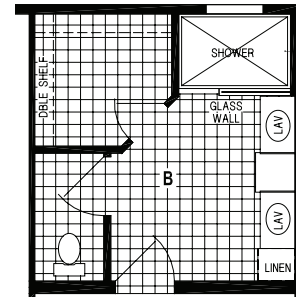
OPTION OVAL TUB BATH



OPTION FOURTH BEDROOM



OPTION COMPUTER
DESK ALCOVE

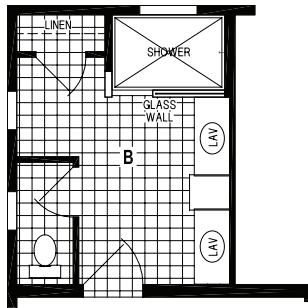
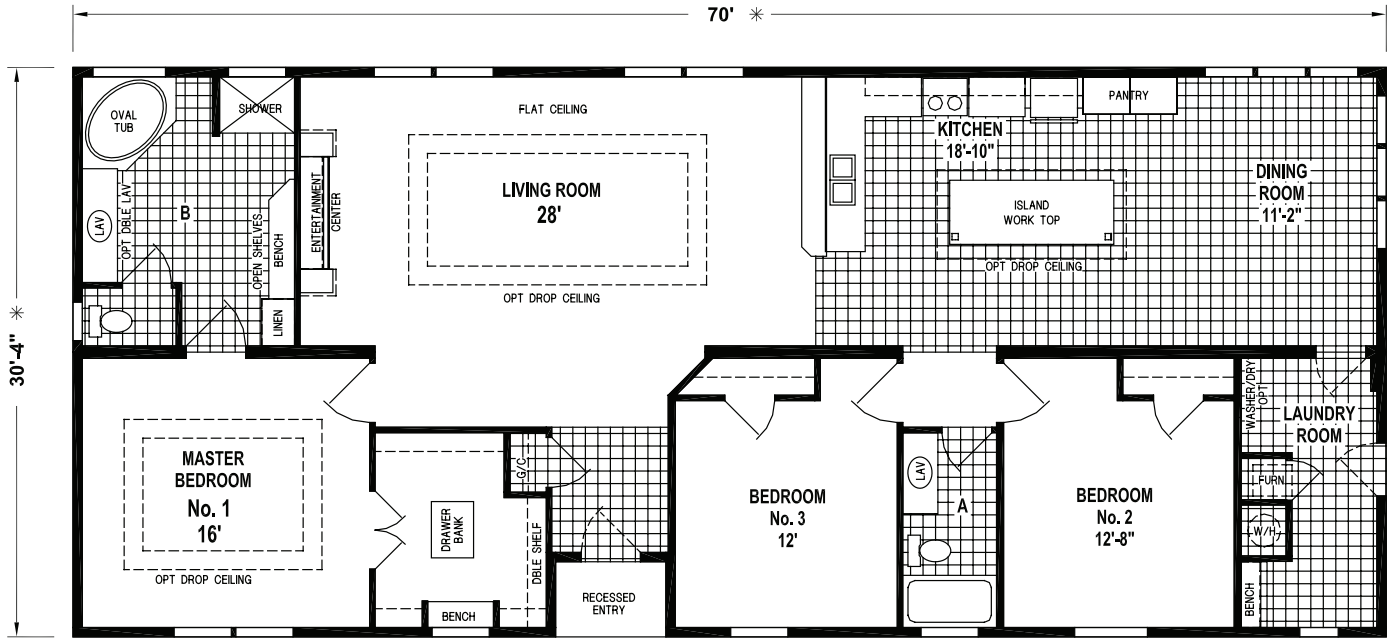


OPTION WALK-IN
SHOWER BATH

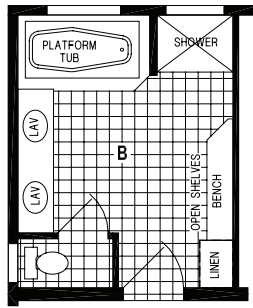
6893P

70' x 32' - 2,123 SQ. FT. - 3 BEDROOMS - 2 BATHS

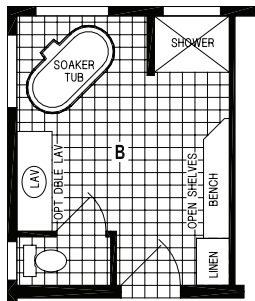
OPTION SLIDING GLASS DOOR



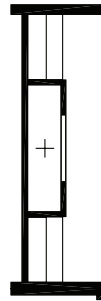
OPTION WALK-IN SHOWER BATH



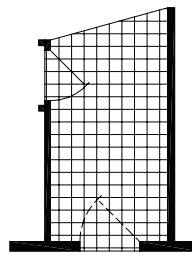
OPTION PLATFORM TUB BATH



OPTION SOAKER TUB BATH



OPTION FIREPLACE ENTERTAINMENT CENTER



OPTION DELETE RECESSED ENTRY

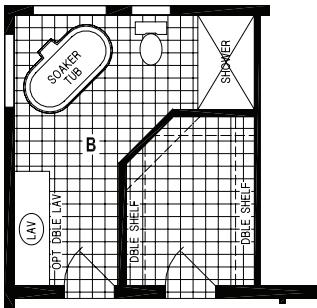
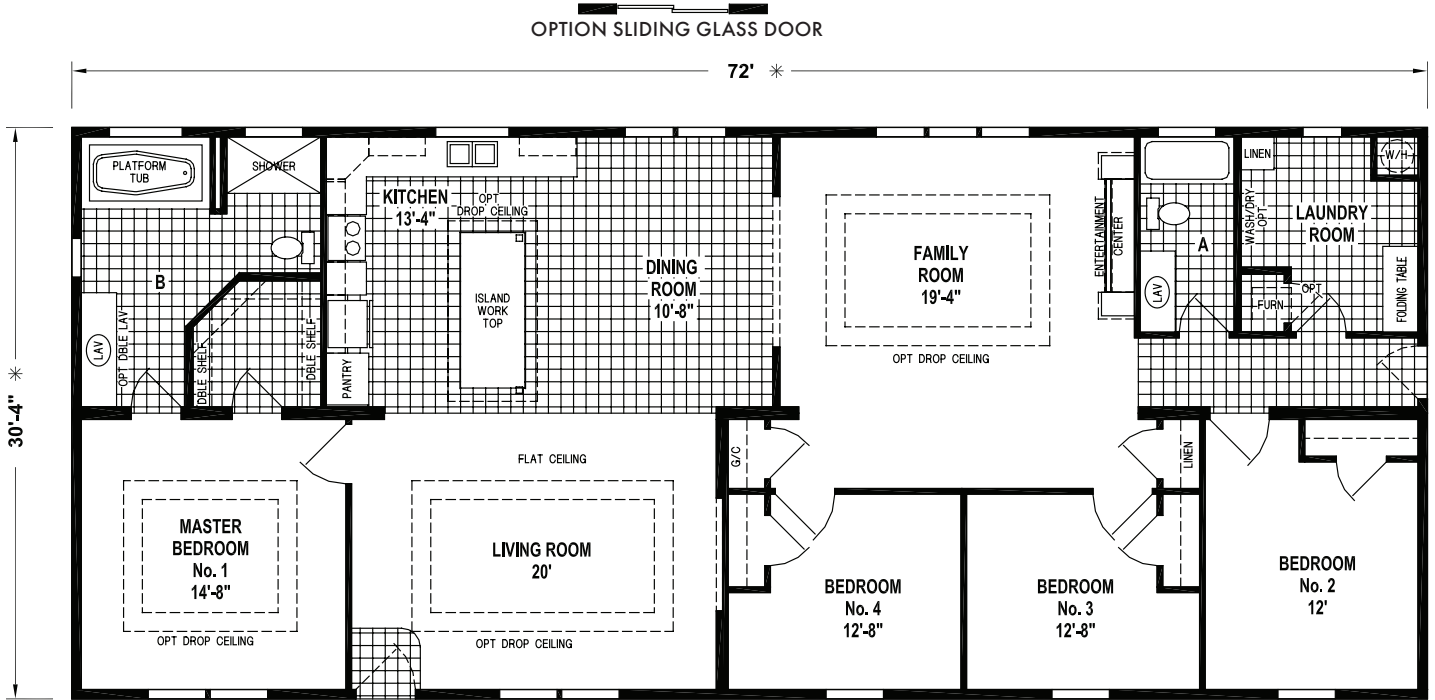


Some features shown may be optional.

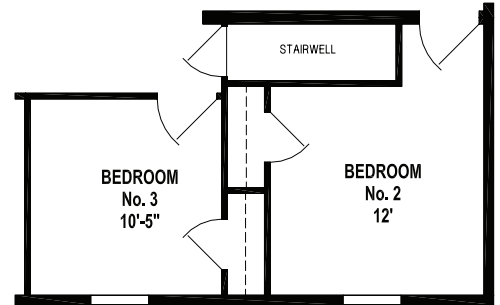
32' SERIES

6889P

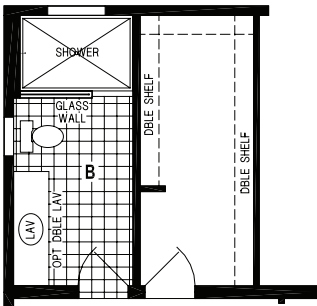
72' x 32' - 2,304 SQ. FT. - 4 BEDROOMS - 2 BATHS



OPTION SOAKER TUB BATH



OPTION STAIRWELL



OPTION WALK-IN SHOWER BATH

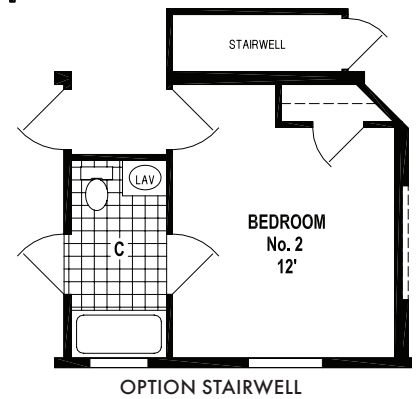
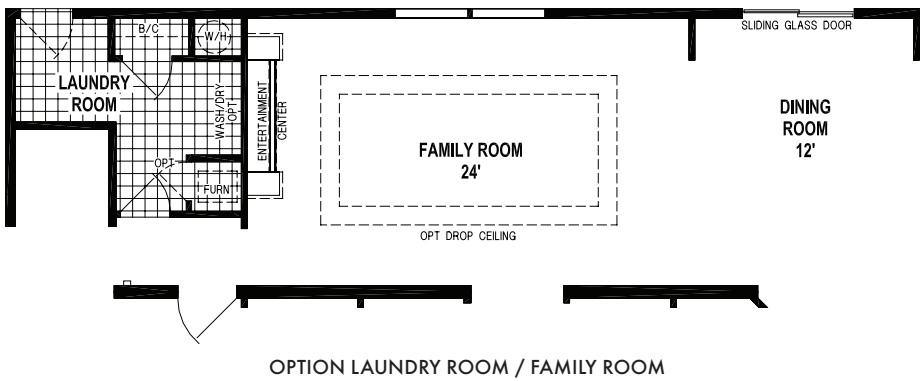
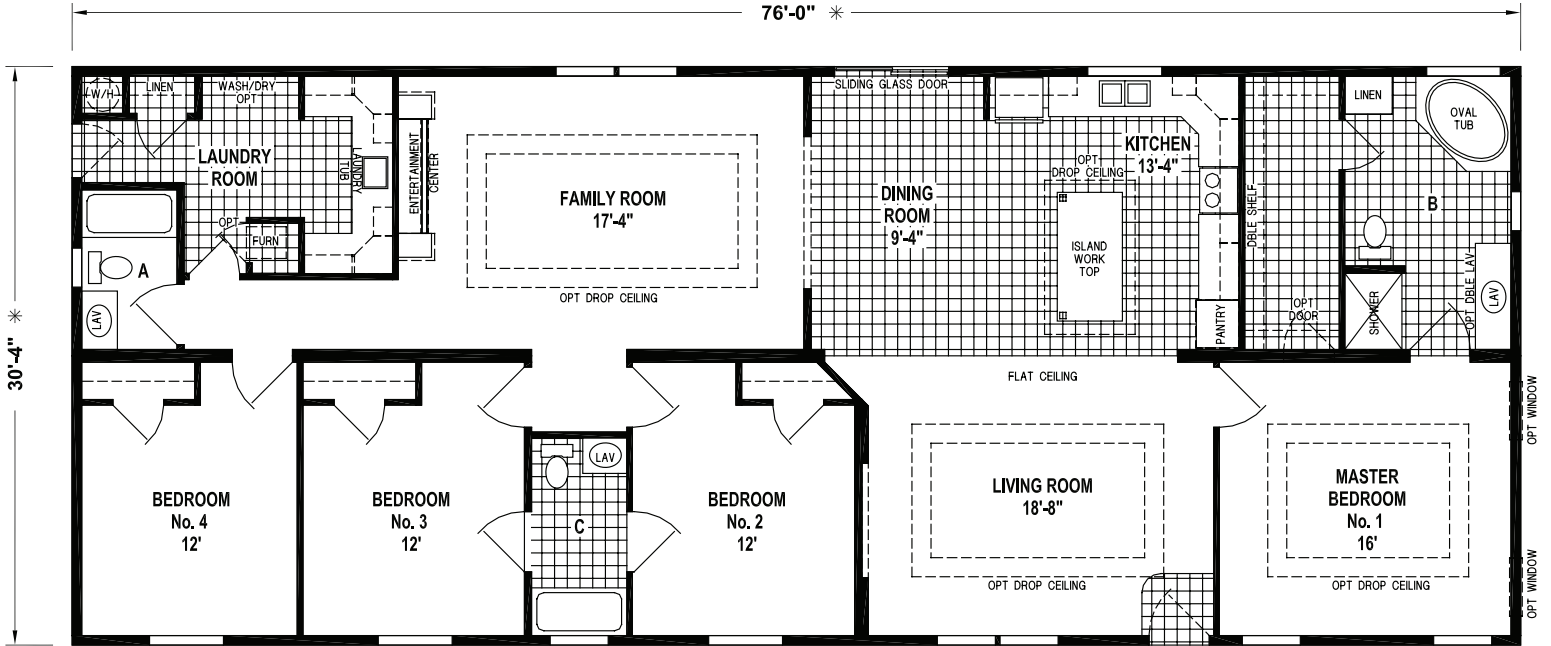


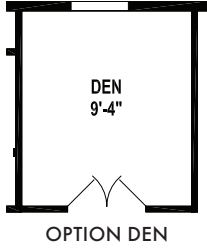
Some features shown may be optional.

32' SERIES

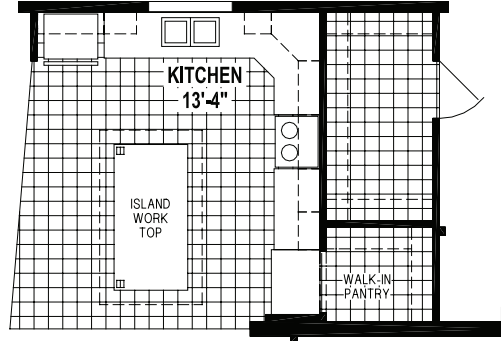
6806P

76' x 32' - 2,305 SQ. FT. - 5 BEDROOMS - 3 BATHS

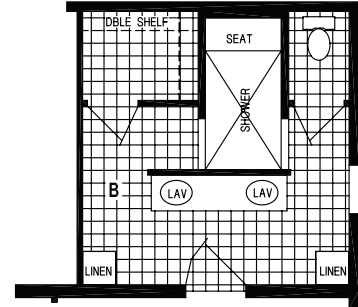




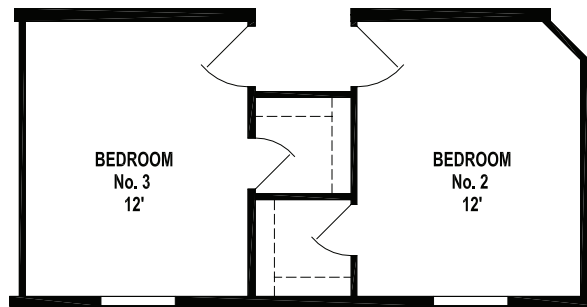
OPTION DEN



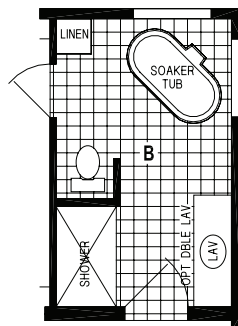
OPTION HIDDEN PANTRY



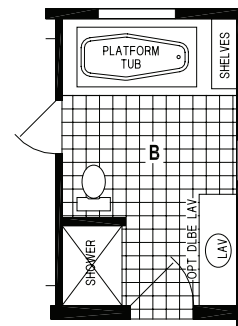
OPTION WALK-IN SHOWER BATH



OPTION WALK-IN CLOSETS



OPTION SOAKER TUB BATH



OPTION PLATFORM TUB BATH

Spring View

STANDARD FEATURES

CONSTRUCTION

- 8" Sidewall
- Continuous Plywood Marriage Line Beam
- 2 x 6 Exterior Wall Construction
- Nominal 3/12 Roof Pitch with 30# Roof Load
- Detachable Hitch
- Recessed Frames
- Thermo Zone II Insulation
- R-19 Ceiling, R-19 Walls and R-11 Floors

PLUMBING/ELECTRICAL

- 200 Amp Service
- 2-Bulb Light Fixtures Throughout (Except Closets)
- Ceiling Fan in Living Room
- (2) Can Lights in Dining Room
- (1) Exterior Receptacle GFI
- (1) Exterior Frost-Free Faucet
- Whole House Water Shut-Off
- Water Shut-Offs Throughout (All Fixtures)

EXTERIOR

- Vinyl Siding
- Vinyl Shutters Front and Door Side
- OSB Sheathing with House Wrap
- 25-Year Roof Singles
- 36" 3-Lite Fiberglass Front Door
- 32" 6-Panel Fiberglass Rear Door
- Single Hung Low-E windows

INTERIOR

- Tape and Texture in Living Room, Dining Room, Kitchen, Hall, Family Room and Master Bedroom
- Accent Wall in Living Room and Master Bedroom
- Flat Ceilings
- Linoleum at Entry
- Shaw "Mantra" Carpet with 1/2" Carpet Pad
- Tack Strip and Carpet Bar
- 1-1/2" Kiri-Wood Blinds

KITCHEN

- Modular Cabinet Construction
- Flat Panel Doors
- Wood Cabinet Stiles
- Entertainment Island (per floor plan)
- Drawer over Door Construction
- Drawer Bank (per floor plan)
- Roller Drawer Guides
- Shelf in Base Cabinets
- 4" Formica Backsplash
- Crown Molding at Cabinets
- Stainless Steel 8" Double Bowl Sink
- Single Lever Faucet with Sprayer

APPLIANCES

- 18 Cu. Ft. Double Door Frost-Free Refrigerator
- 30" Electric Range with Lighted Range Hood

BATHROOM(S)

- Modular Cabinet Construction
- Flat Panel Doors
- Wood Cabinet Stiles
- 1-Piece Fiberglass Tub/Shower
- China Bowl Sinks
- Single Lever Metal Faucet
- Elongated China Commodes
- Vanity Light and Power Vent Fan with Light

HEATING/UTILITY

- Electric Furnace
- Full Perimeter Heat
- 40 Gallon Electric Water Heater
- Plumb for Washer
- Wire For Dryer
- Wire Shelving above Washer and Dryer

For your comfort and safety, Skyline home designs are approved and inspected for conformance to federal standards.

**Dimensions stated to industry standards. Width and length dimensions are nominal and are not to be used for setup of home on site; consult selling retailers for exact specifications. Overall length does not include approximately four foot hitch. The square footage is approximate and based upon nominal exterior floor size.*

Room sizes are measured from floor ends and wall centers.

Because of progressive product improvement, all prices and specifications are subject to change without prior notice or obligation to Skyline Corporation. Your retailer, an independent contractor, who is not an agent of Skyline Corporation, is the party responsible for your purchase contract and any additions, deletions, alterations, or attachments made to or in your home.

YOUR LOCAL SKYLINE RETAILER:



WWW.SKYLINEHOMES.COM